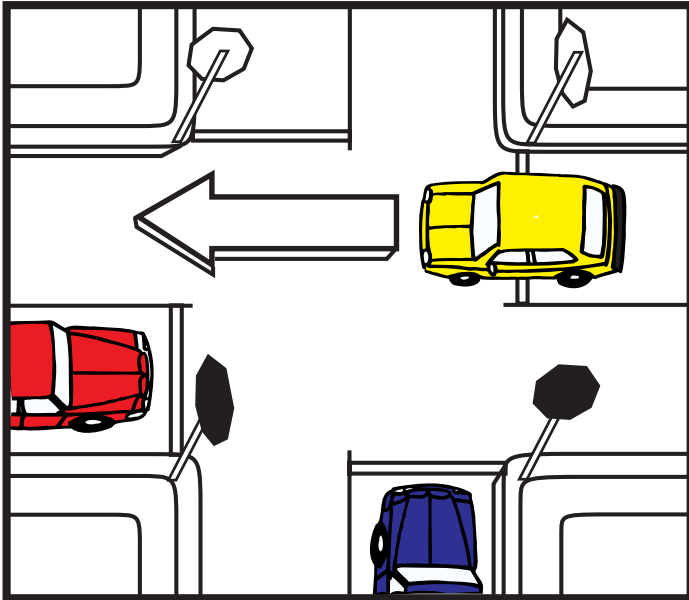


All-Way Stop

At an intersection where stop signs are located on three or four corners, **the first vehicle to come to a full stop** should be allowed to proceed first.



When two vehicles arrive at such an intersection at the same time, **the vehicle on the right-hand side** has the right of way and should proceed through the intersection first.

If you are behind a vehicle that has stopped at the stop sign, you must also come to a complete stop at the stop sign when that vehicle has moved on.

*Remember, if you are not sure who has the right of way, it is safer to yield the right of way to the other driver. It is better to avoid a collision than to insist on having the right of way. **Never** pass a vehicle which has stopped at a stop sign, traffic light or crosswalk.

Always yield right of way to emergency vehicles when they have their lights flashing and the siren on. Pull to the right as far as possible and stop. Remain stopped until the emergency vehicle has passed.

When a Traffic Light is not working, treat as an all-way stop.